



*FOR THE DISCERNING ENTERTAINER...*

# CART INSTALLATION FAST GUIDE

## CAUTION!

Some parts may have sharp edges, care must be taken to avoid any injury when handling the various components. Please read instructions before beginning. Wear gloves when handling. Two or more people should work together to assemble the cart and BBQ.

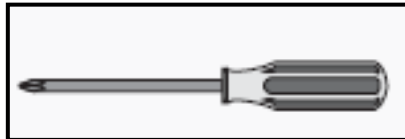
Note: Avoid using side shelf to move cart. Push or pull cart by grasping corners of head.

## GETTING STARTED

Note the tools you will need before you begin. Remove any packaging material or protective plastic from components.



**Adjustable  
spanner/wrench x  
2pcs**



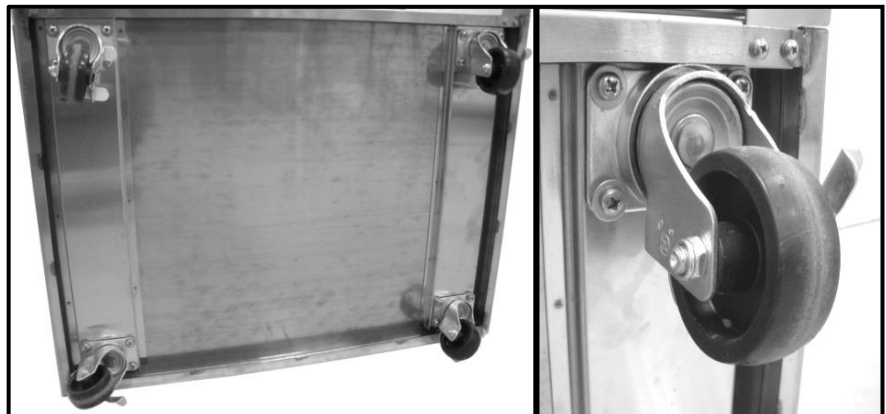
**Phillips Head  
Screwdriver x 1pc**

## LOCATING THE CART

For proper use, this product should be positioned on a flat ground or patio. Unevenness such as bumps, cracks and protrusions should be 1/4" or less.

### Step1 Install 4 casters

1. Lie down cart body; find the caster mountings on the bottom.
2. Attach 4 casters with screws (M8x16mm) by a screwdriver.
3. Make sure all screws are fastened, lift you cart stands on floor.



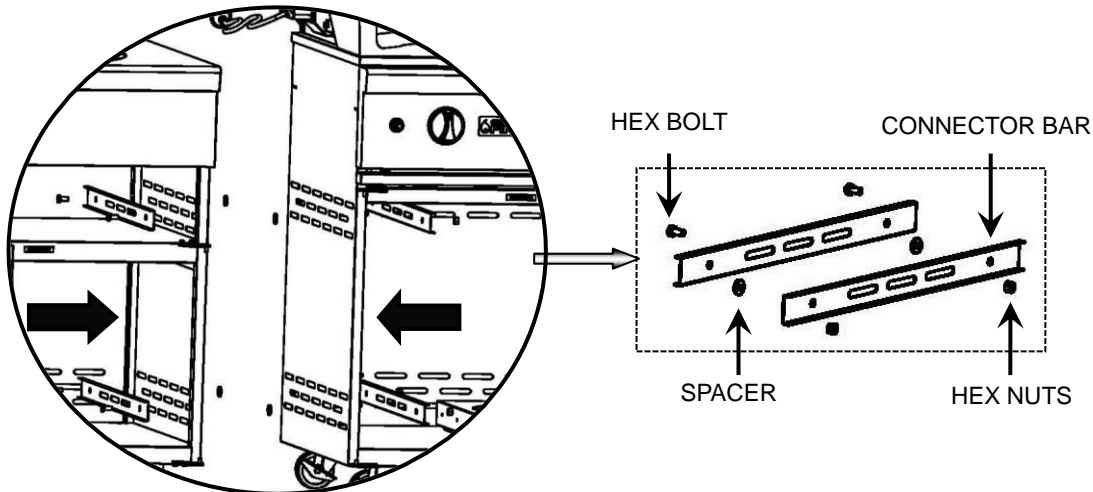
### Step2 Install Door Handles

1. Open cart doors and get handles from back by removing screws (M4x8mm) on front.
2. Attach door handles to the front and secure the screws (M4x8mm) on back.



### Step3 Kamado Grill Cart Connect With Gas Grill Cart

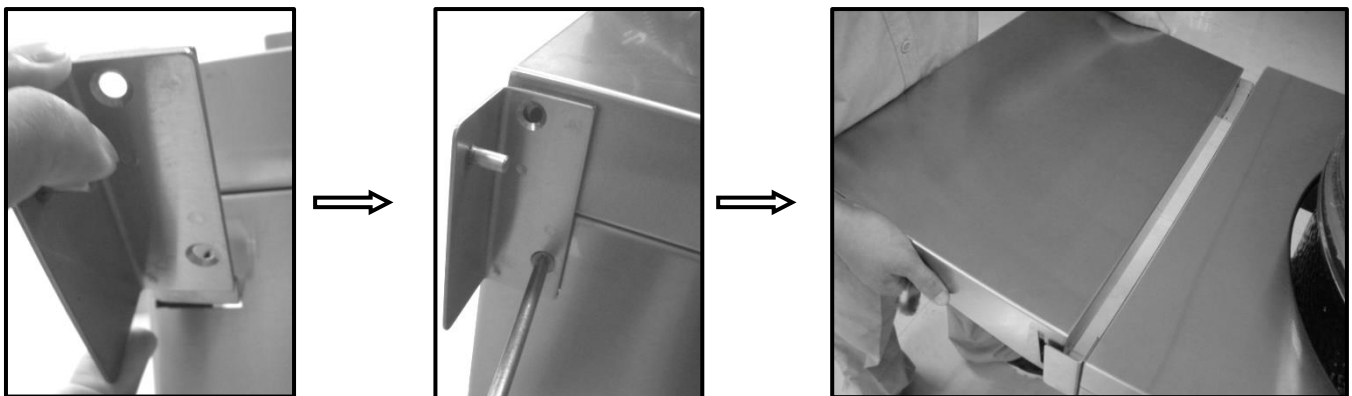
1. Remove left side shelf and brackets from gas grill cart.
2. Get kamado grill cart and gas grill cart stand together side by side.
3. Secure both cart with bolts (M6x16) and hex nuts (M6) as shown in below pictures. Use the connector bar provided and bolts go through vent holes on the cart side. Put the spacers between carts. DO NOT tighten them temporally.
4. Adjust positions of both carts to make sure the alignment side to side. Tighten the bolts.



### Step3 Install Side Shelf

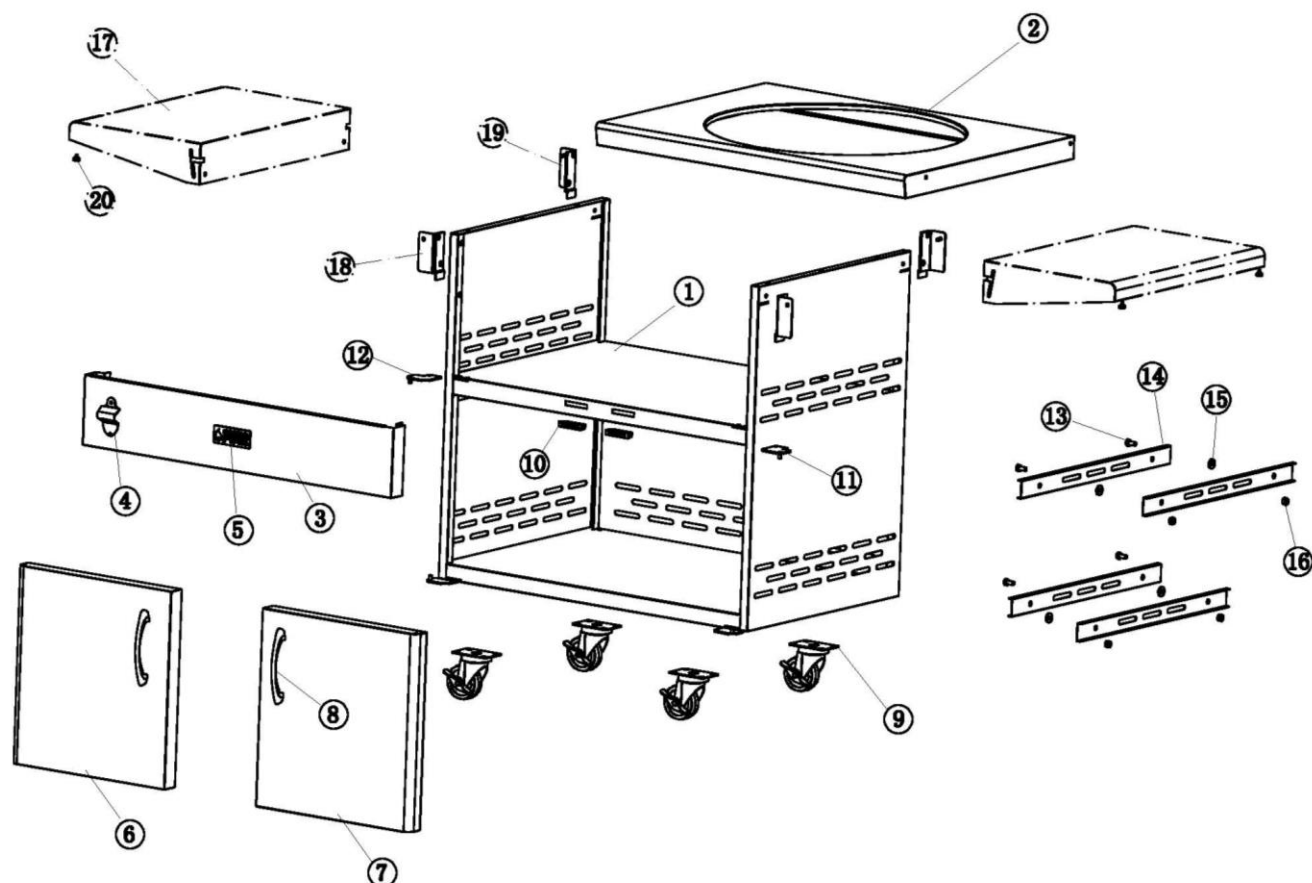
**Note: There's only one side shelf be attached onto Kamado Grill Cart!**

1. Take the brackets uninstalled from Gas grill cart, and put into the position as shown in picture below.
2. Fasten the brackets onto the cart with flat screws (M5 x 10).
3. Attach side shelf onto cart as shown in picture.



※For stand alone kamado grill cart, some people may need a set of two side shelves on both side. Please ask your dealer for SIDE SHELF KIT (GF-SLF) information.

## EXPLODED VIEW: GF-KJC



## PARTS LIST

ITEM	PART NO	DESCRIPTION	QTY
1	GF-KJCP05	KAMADO TABLE BODY	1
2	GF-KJCP04	TABLE TOP	1
3	GF-KJCP16	FRONT PANEL	1
4	GF-KJCP17	BOTTLE OPENER	1
5	GF32P29	LOGO PLATE	1
6	GF-KJCP12A	LEFT DOOR	1
7	GF-KJCP12B	RIGHT DOOR	1
8	GF26CP08	DOOR HANDLE	2
9	GF26CP09A	CASTER	4
10	GF26CP06	MAGNET LATCH	2
11	GF26CP05A	DOOR HINGE A	1
12	GF26CP05B	DOOR HINGE B	1
13	GF-KJCP10	BOLT M6x16	4
14	GF-KJCP08	CONNECTOR BAR	4
15	GF-KJCP09	SPACER	4
16	GF-KJCP11	NUT M6	4
※17	GF26CP01	SIDE SHELF	2
※18	GF26CP11A	SHELF BRACKET A	2
※19	GF26CP11B	SHELF BRACKET B	2
※20	GF32P44	RUBBER BUMPER	4

※Part number 17, 18, 19 and 20 are not included in a standard package of Kamado Grill table. Customer must purchase the SIDE SHELF KIT (GF-SLF) separately if need. Please ask your dealer for side shelf kit information.

## **WARRANTY INFORMATION**

### **Limited Ten Year Warranty**

The stainless steel carts are warranted to be free from defects in material and workmanship when subjected to normal domestic use and service for ten years from the original purchaser. This warranty is limited to the replacement of defective parts, with the owner paying all other costs including labor.

### **Limited One year Warranty**

All other components are warranted to be free from defects in material and workmanship when subjected to normal domestic use and service for a period of one year from the date of purchase.

### **Limitations and Exclusions**

- 1) Warranty applies to the original purchases and may not be transferred.
- 2) Warranty is in lieu of all other warranty, expressed or implied and all other obligations or liabilities related to the sale of use or use of its grill products.
- 3) Warranty shall not apply to damage resulting from misuse, abuse, alteration of or tampering with the appliance, accidental, hostile environment, flare-up fires, improper installation, or installation not in accordance with the instructions contained in this manual or local code.
- 4) Company shall not be liable for incidental, consequential, special or contingent damages resulting from its breach of this written warranty or any implied warranty.
- 5) No one has the authority to add to or vary this warranty, or to create any other obligation or liability in connection with the sales or use of the company's products.

Warranty shall not apply to cosmetic imperfections not affecting the structural integrity of the appliance, having been caused by fair wear and tear, or as a result of extreme seasonal or marine conditions.

Warranty shall not apply to damage caused by acts of God, neglect of the product, or failure to maintain the product in full accordance with the User's Manual.

The term of this Warranty shall commence on the date of purchase, and is not subject to extension of any kind as a result of any repair or replacement being undertaken during the lifetime of the warranty.

## **WARRANTY SERVICE**

### **How to Obtain Service:**

For warranty service, please contact your local dealer. Before you call, please have the following information available:

- Model Number
- Serial Number
- Proof of purchase by the original owner
- Date of installation
- Brief description of problem

Your satisfaction is important to us. If a problem cannot be resolved to your satisfaction, please feel free to contact us as below.

#### **New Zealand**

Hauland Limited  
1b Douglas Alexander parade, Albany, Auckland  
NZ Hotline: 0800 BUFFALO  
Website: [www.hauland.co.nz](http://www.hauland.co.nz)  
Email: [info@hauland.co.nz](mailto:info@hauland.co.nz)

#### **Australia**

Hauland PTY Limited.  
Website: [www.Grandfirebbqs.com.au](http://www.Grandfirebbqs.com.au)  
[info@grandfirebbqs.com.au](mailto:info@grandfirebbqs.com.au)